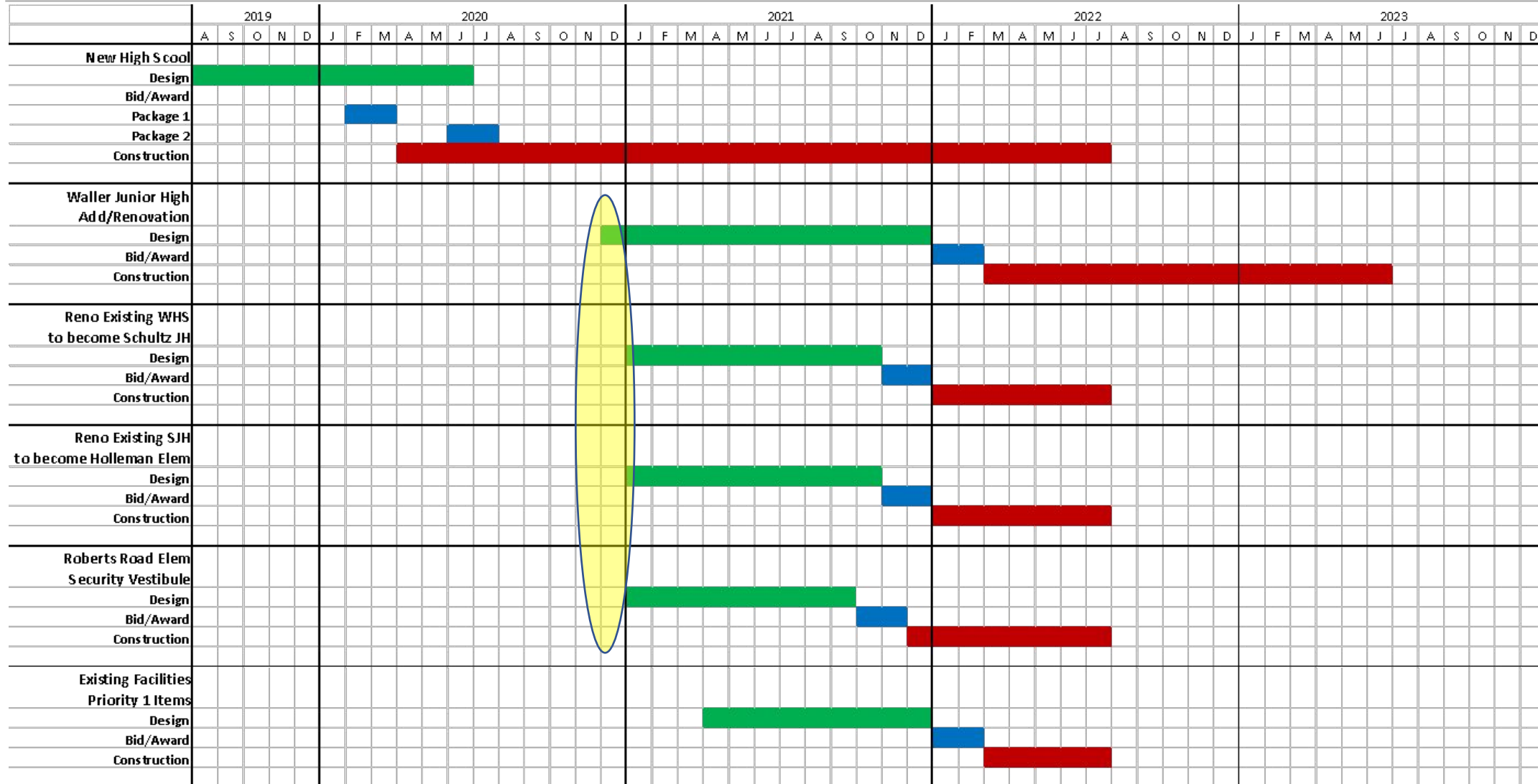


2019 BOND

October 2020 UPDATE



2019 Bond Planning Schedule



New Waller High School



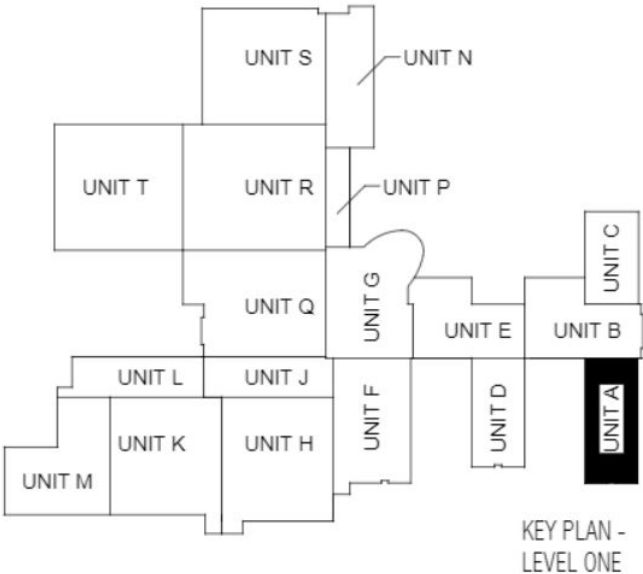
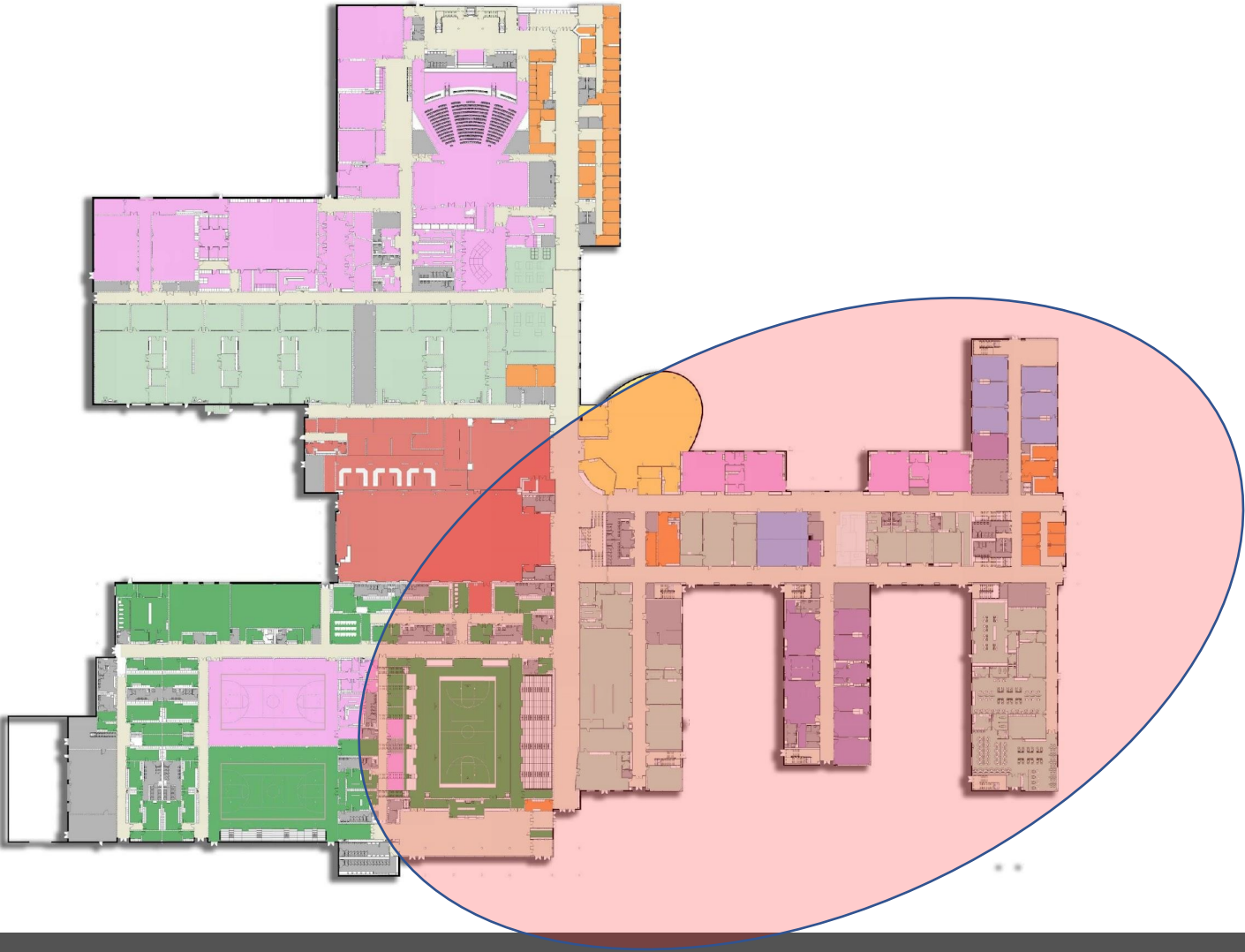
East Elevation from Student Parking

New Waller High School



East Elevation

New Waller High School



Floor Plan

Aerial Photos - New Waller High School



New Waller High School



View from the Southeast (back) of the school

Project Photos - New Waller High School

Structural Steel Erection



Competition Gym

**Roof
Eave
Detailing**

**Long Span
Roof Trusses**

**Bleacher
Framing**



Project Photos - New Waller High School

**Auditorium
sloped seating preparation**



**Kitchen Slab
preparation**

Project Photos - New Waller High School



**Early morning Concrete
pour in Area 3rd Floor Area E**



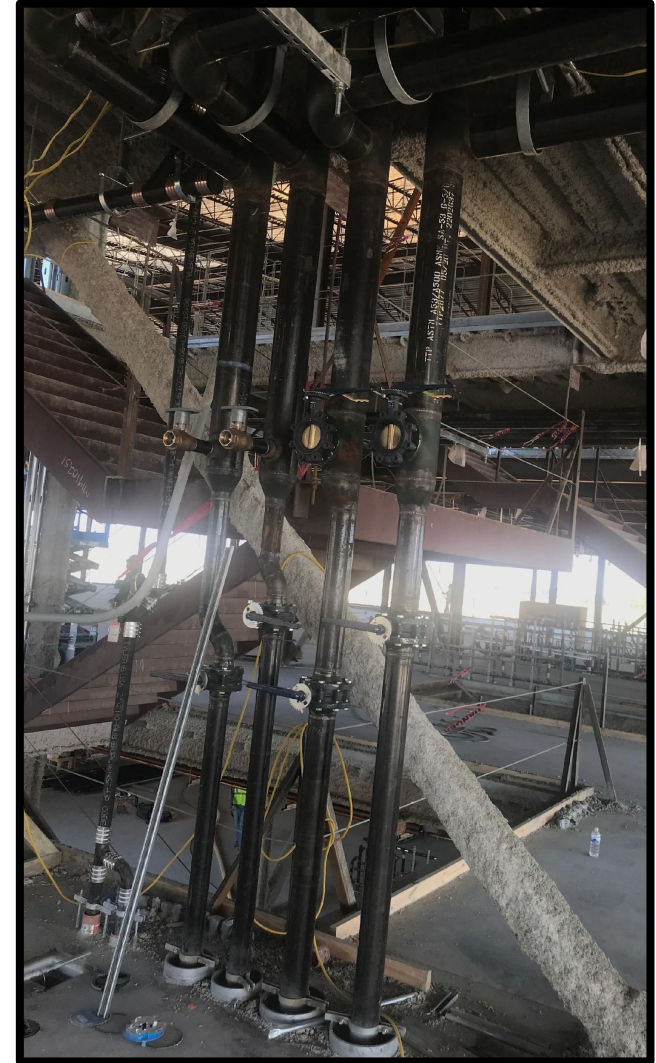
**CenterPoint
electrical ductbank**

Project Photos - New Waller High School



**Plumbing, HVAC,
and Electrical
Rough-In
(Fire Proofing)**

**HVAC hot &
cold water
piping**



Project Photos - New Waller High School

**Exterior
Light Gauge
Metal
Framing**



Project Photos - New Waller High School



Project Update - New Waller High School

Completed/Current Activities

- Slab on Grade (SOG) – 99%, Kitchen remains
- Site Paving - 90%
- CenterPoint Underground Ductbank - ongoing
- Building Steel Erection – 35% Areas A-H
- Fire Proofing – ongoing in Areas E and D
- Elevated Concrete on Metal Deck – 95%
- Metal Roof Deck - ongoing, complete in A, B, C
- Interior Electrical rough-in - ongoing
- HVAC Ductwork & Plumbing – ongoing
- Roofing Insulation and Iso ice & water barrier stated
- Exterior Light Gauge Metal Framing started
- Lime Treatment of Track started

Upcoming Activities

- Site Pavement – East driveway
- Stormwater Pump Station
- Steel Erection in Areas K, L, M, Q)
- Fire Sprinkler Piping
- Exterior Sheathing and waterproofing
- Exterior Brick and Interior CMU walls
- Window Frames

- Groundbreaking- TBD
- Topping-out / Beam Signing - TBD

Thank You!

